

## 内置功率开关的滞回式降压型高亮度LED驱动器

UM1351Y SOT89-5

UM1351S SOT23-5

### 描述

UM1351是一款内置功率开关的PWM降压型转换器，专为高效驱动单个或多个串联LED设计，适用于输入电压高于LED电压的场景，最多可驱动8个串联LED。该器件输入电压范围为6V至35V，采用带有高压侧电流采样电阻的滞回式控制调节恒流输出电流，最高可达700mA。该器件非常适合宽输入范围的应用。高压侧电流采样和集成电流采样电路最大限度地减少了外部元件的数量，同时保证精确的输出电流。该器件可根据电源电压和外部元件的不同，提供高达24 W的输出功率。

通过向VSET引脚施加外部控制信号，可将输出电流调整到低于设定值。VSET引脚输入可以是直流电压或PWM波形，特定的PWM波形输入可实现宽亮度范围的LED调光。其滞回式控制可确保出色的输入电源抑制以及负载瞬变和PWM调光时的快速响应。

当VSET引脚的电压小于或等于0.2V时，功率开关关断，UM1351进入极低工作电流的待机状态。

UM1351采用SOT89-5和SOT23-5封装，专用于工业照明和普通照明。

### 应用

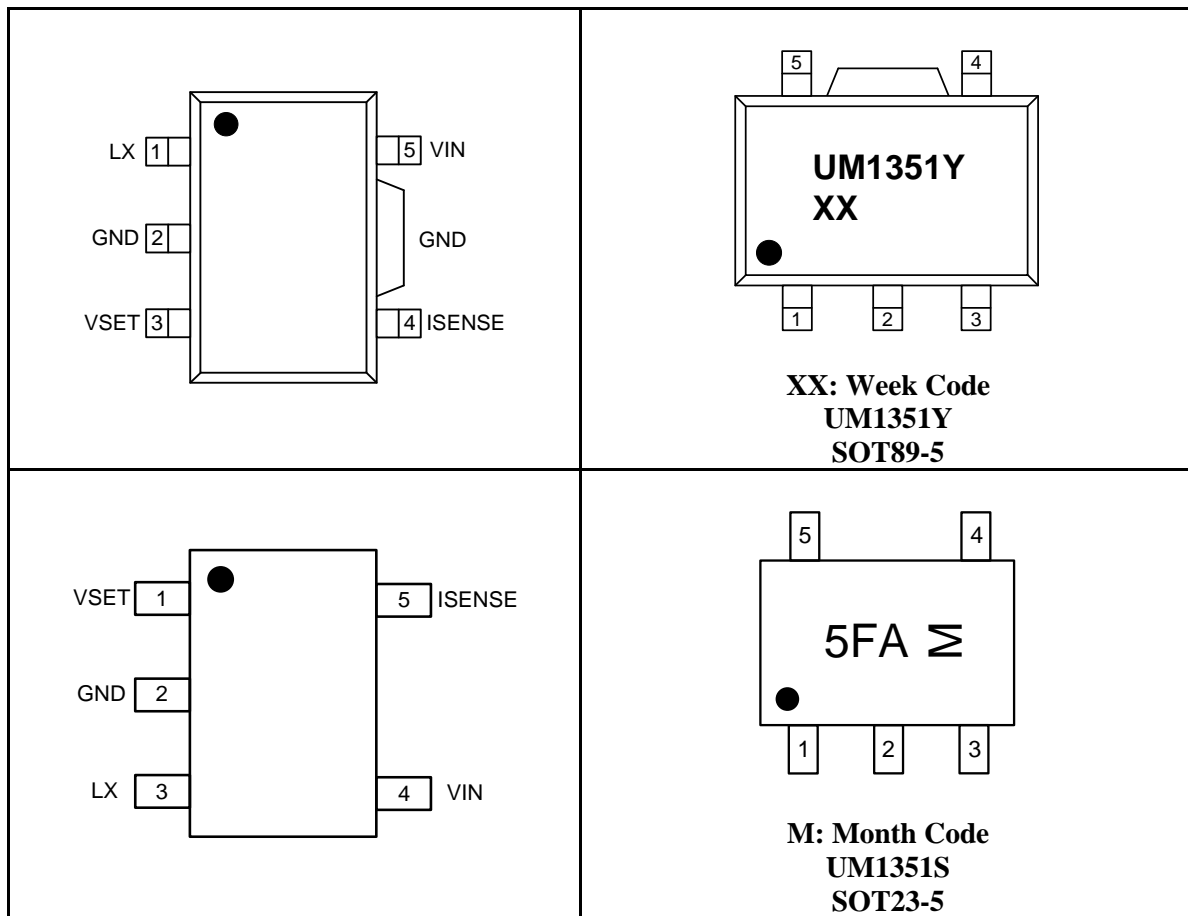
- 低压 LED 灯代替卤素灯
- 低压工业照明
- LED 背光照明
- LED 信号灯
- 用作 DC/DC 或 AC/DC 模式的 LED 驱动器
- 通用、恒定电流源

### 特性

- 具有高压侧电流采样功能的滞回式控制装置
- 集成 35V 0.5Ω NDMOS
- 效率高达 98%
- 宽输入电压范围：6V 至 35V
- $\pm 5\%$  LED 电流精度
- LED 恒定电流可调
- 采用模拟信号或 PWM 信号进行 PWM 调光
- LED 电路过温、开路保护
- 开关频率高达 1MHz
- 无铅 SOT89-5 和 SOT23-5 封装

## Pin Configurations

## Top View



## Ordering Information

Part Number	Packaging Type	Marking Code	Shipping Qty
UM1351Y	SOT89-5	UM1351Y	1000pcs/7Inch Tape & Reel
UM1351S	SOT23-5	5FA	3000pcs/7Inch Tape & Reel

## Pin Description

Pin Number		Symbol	Function
UM1351Y	UM1351S		
1	3	LX	Drain of NDMOS switch.
2	2	GND	Ground (0V).
3	1	VSET	Multi-function On/Off and brightness control pin: <ul style="list-style-type: none"> <li>• Leave floating for normal operation.</li> <li>• Drive to voltage below 0.2V to turn off output current.</li> <li>• Drive with DC voltage (<math>0.3V &lt; V_{SET} &lt; 2.5V</math>) to adjust output current from 12% to 100% of <math>I_{OUTnom}</math>.</li> <li>• Drive with PWM signal from open-collector or open-drain transistor, to adjust output current. Adjustment range 1% to 100% of <math>I_{OUTnom}</math> for <math>f &lt; 100kHz</math>.</li> <li>• Connect a capacitor from this pin to ground to increase soft-start time. (Default soft-start time = <math>10\mu s</math>. Additional soft-start time is approximately <math>700\mu s/nF</math>.)</li> </ul>
4	5	ISENSE	Connect resistor $R_S$ from this pin to VIN to define nominal average output current $I_{OUTnom} = 0.1/R_S$ .
5	4	VIN	Input voltage (6V to 35V). Decouple to ground with $10\mu F$ or higher X7R ceramic capacitor close to device.

## Absolute Maximum Ratings

Over operating free-air temperature (unless otherwise noted) (Note 1)

Symbol	Parameter		Value	Unit
$V_{IN}$	Input Voltage Range		-0.3 to +35	V
$V_{LX}$ , $V_{ISENSE}$	Voltages on LX, ISENSE		-0.3 to +35	V
$V_{SET}$	VSET Pin Voltage		-0.3 to +6	V
$\theta_{JA}$	Thermal Resistance (Junction to Ambient)	SOT89-5	100	$^{\circ}C/W$
		SOT23-5	230	
$T_J$	Maximum Junction Temperature		+150	$^{\circ}C$
$T_{STG}$	Storage Temperature Range		-55 to +150	$^{\circ}C$
$T_L$	Maximum Lead Temperature for Soldering 5 Seconds		+300	$^{\circ}C$

Note 1: These are stress ratings only and functional operation is not implied. Exposure to absolute maximum ratings for prolonged time periods may affect device reliability. All voltage values are with respect to network ground terminal.

## Recommended Operating Conditions

Symbol	Parameter	Min	Typ	Max	Unit
$V_{IN}$	Input Voltage Range	6.0		35	V
$T_A$	Operating Ambient Temperature	-40		85	$^{\circ}C$
$T_J$	Operating Junction Temperature	-40		150	$^{\circ}C$

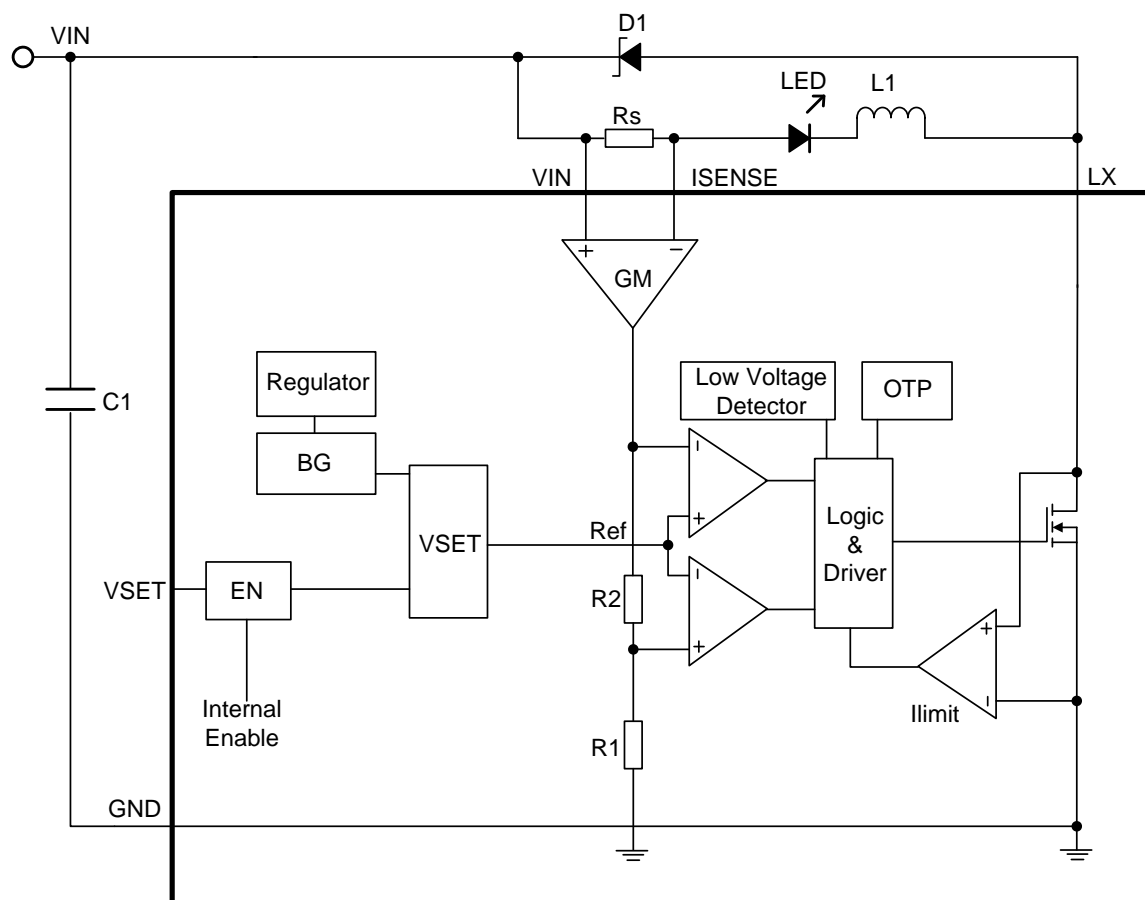
**Electrical Characteristics**

(V<sub>IN</sub>=16V, T<sub>A</sub>=25 °C, unless otherwise noted)

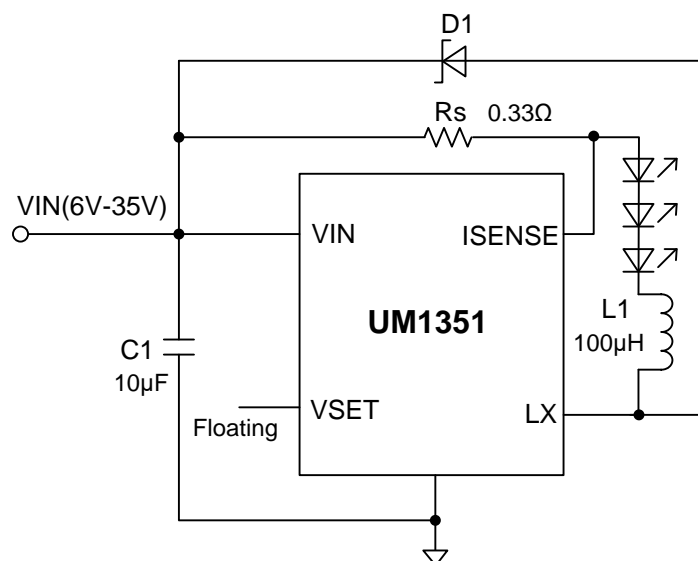
Symbol	Parameter	Test Conditions	Min	Typ	Max	Unit
V <sub>IN</sub>	Input Voltage Range		6		35	V
I <sub>LED</sub>	Output Current	R <sub>S</sub> =0.33Ω		303		mA
		R <sub>S</sub> =0.15Ω		666		
I <sub>Q</sub>	Quiescent Current without Switching	VSET Pin Floating, V <sub>IN</sub> =16V		430		μA
I <sub>SD</sub>	Shutdown Current	VSET=GND, V <sub>IN</sub> =16V		30	60	μA
V <sub>SENSE</sub>	Mean Current Sense Threshold Voltage	Measured on ISENSE Pin with Respect to VIN	95	100	105	mV
V <sub>SENSE_HYS</sub>	Sense Threshold Hysteresis			±15		%
I <sub>SENSE</sub>	ISENSE Pin Input Current	V <sub>SENSE</sub> =V <sub>IN</sub> -0.1		20		μA
V <sub>EN</sub>	V <sub>SET</sub> Range on VSET Pin	For DC Dimming	0.3		2.5	V
V <sub>ENON</sub>	DC Voltage on VSET Pin to Enable	V <sub>EN</sub> Rising		0.25		V
V <sub>ENOFF</sub>	DC Voltage on VSET Pin to Disable	V <sub>EN</sub> Falling		0.2		V
R <sub>LX</sub>	LX Switch On Resistance	I <sub>LX</sub> =700mA		0.5		Ω
I <sub>LX(leak)</sub>	LX Switch Leakage Current				5	μA
T <sub>SS</sub>	Soft Start Time	V <sub>IN</sub> =16V, C <sub>EN</sub> =1nF		700		μs
F <sub>LX</sub>	Operating Frequency	V <sub>IN</sub> =16V, L=47μH, V <sub>OUT</sub> =9.6V (3 LEDs), I <sub>LED</sub> =700mA		350		kHz
F <sub>LXmax</sub>	Recommended Maximum Switch Frequency			1.0		MHz
T <sub>on_rec</sub> (Note 2)	Recommended Minimum Switch ON Time	For 4% Accuracy		500		ns
	Max Duty Cycle			100		%
D <sub>LX</sub>	Recommended Duty Cycle Range		25		75	%
T <sub>PD</sub> (Note 2)	Internal Comparator Propagation Delay			45		ns
T <sub>OTP</sub>	Over Temperature Protection				150	°C
T <sub>OTP_HYS</sub>	Temperature Protection Hysteresis				40	°C
I <sub>LXmax</sub>	Peak Switch Current		0.75	1.0		A

Note 2: Parameters are not tested at production, but guaranteed by design.

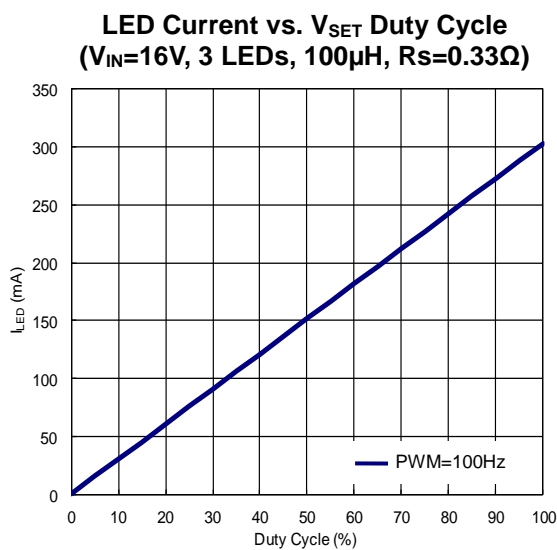
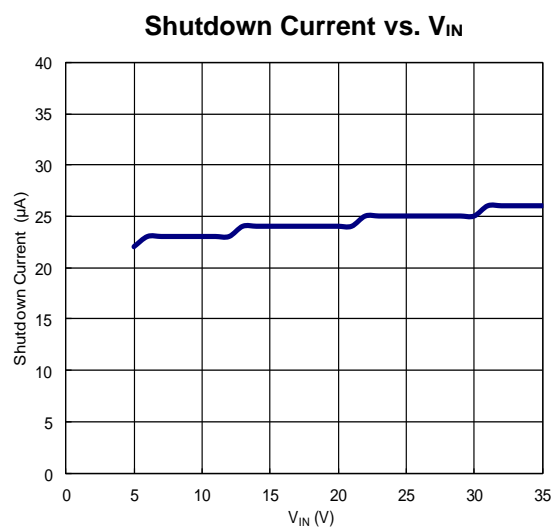
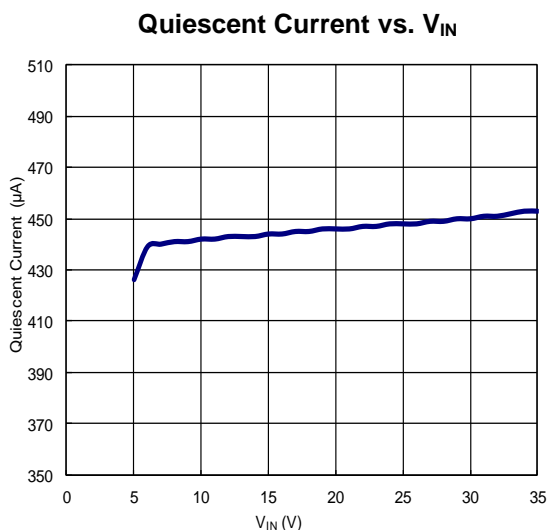
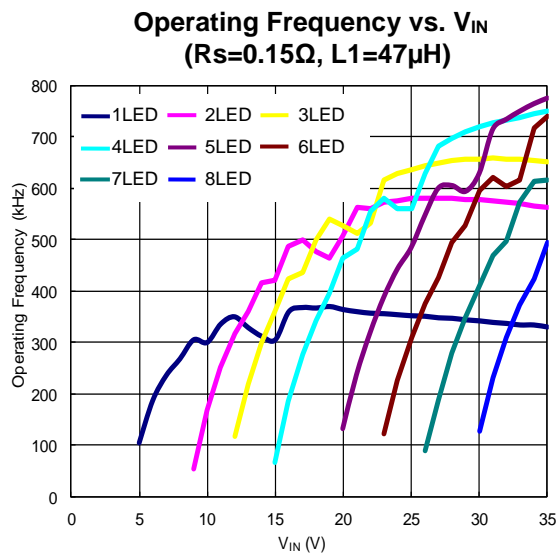
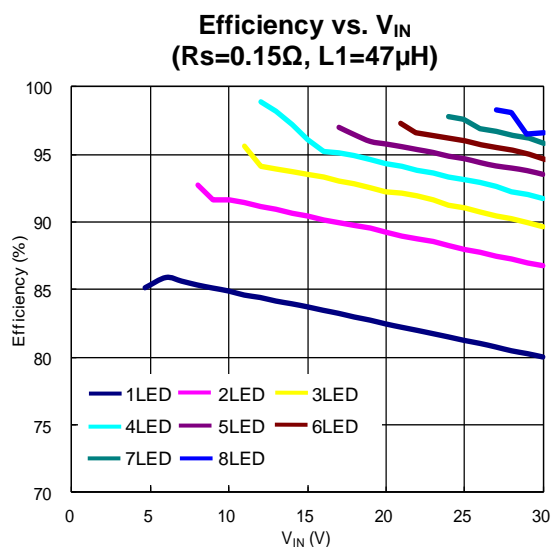
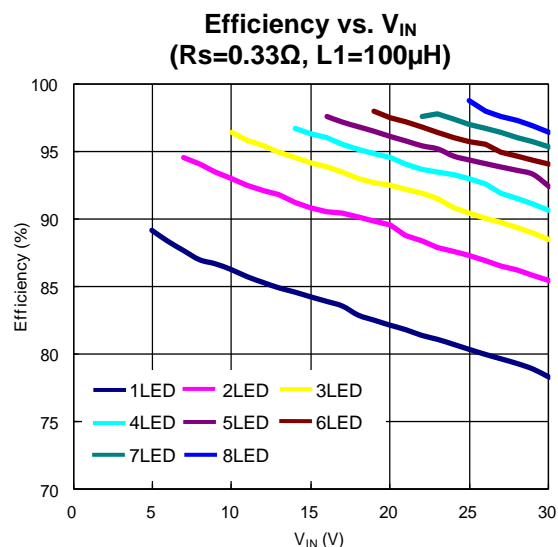
## Function Block Diagram



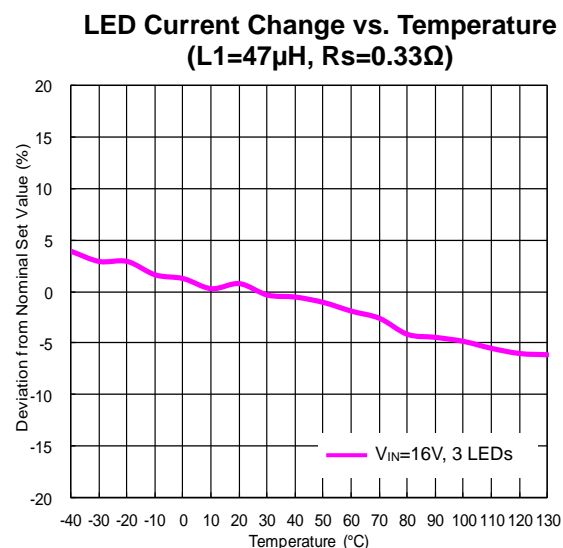
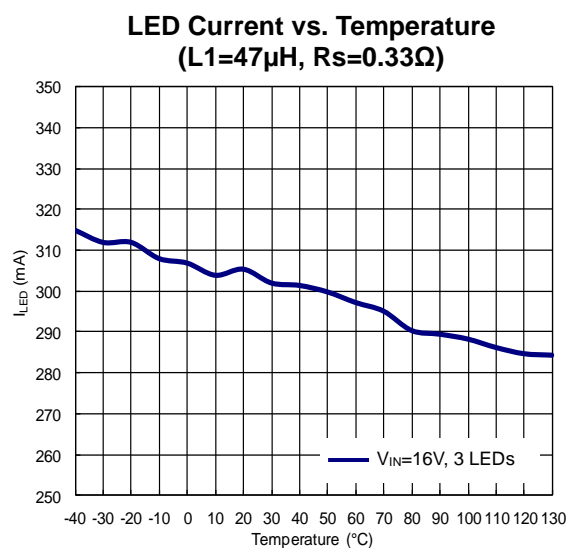
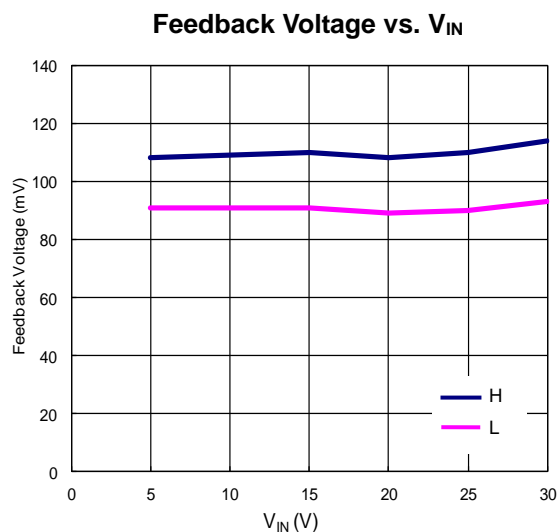
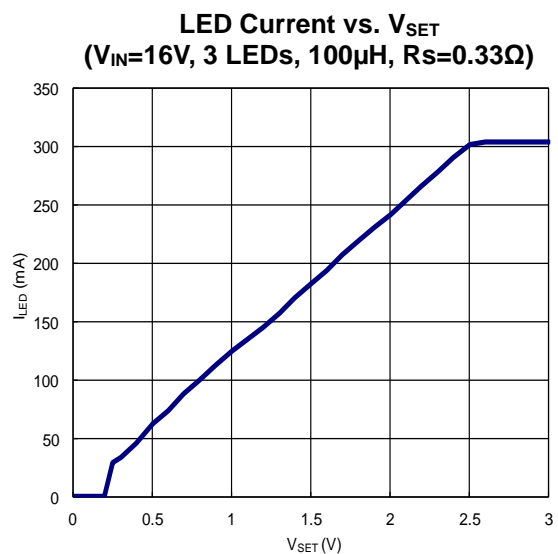
## Typical Application Circuit



## Typical Operating Characteristics

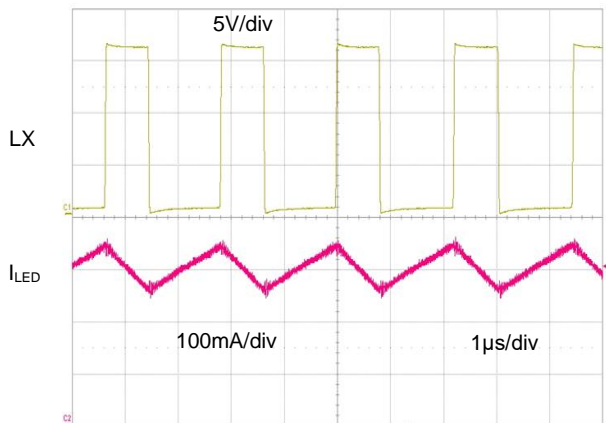


## Typical Operating Characteristics (Continued)

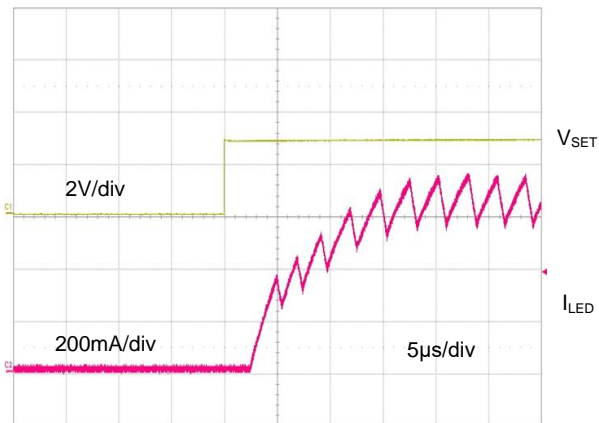


## Typical Operating Characteristics (Continued)

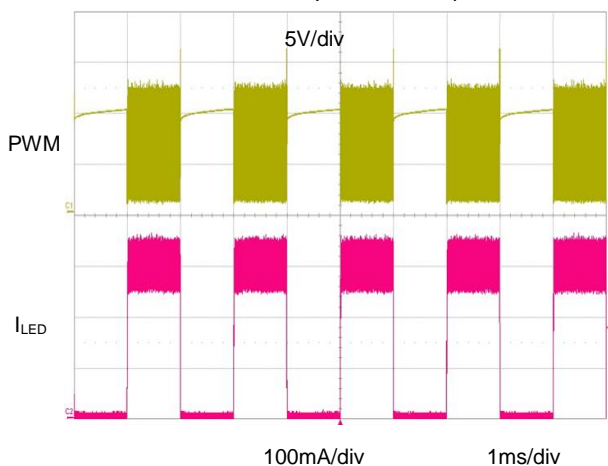
**Steady State Waveforms**  
(3 LEDs, 100 $\mu$ H,  $V_{IN}$ =16V,  $R_s$ =0.33 $\Omega$ )



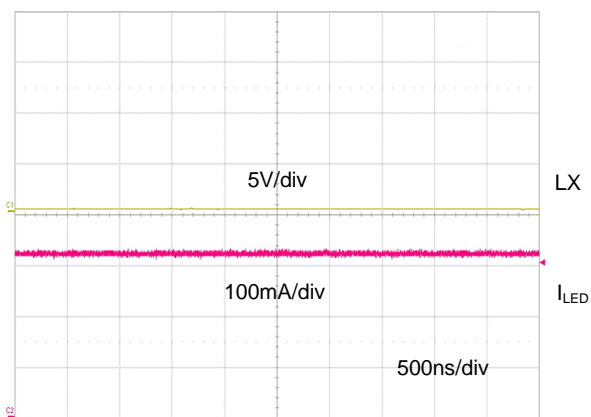
**Start up Waveforms**



**Dimming Waveforms**  
(PWM=50%, 3 LEDs, 100 $\mu$ H,  
 $V_{IN}$ =16V,  $R_s$ =0.33 $\Omega$ )



**100% Duty Cycle Mode**  
(3 LEDs, 100 $\mu$ H,  $V_{IN}$ =10V,  $R_s$ =0.33 $\Omega$ )





## Applications Information

### Setting Nominal Average Output Current with External Resistor $R_S$

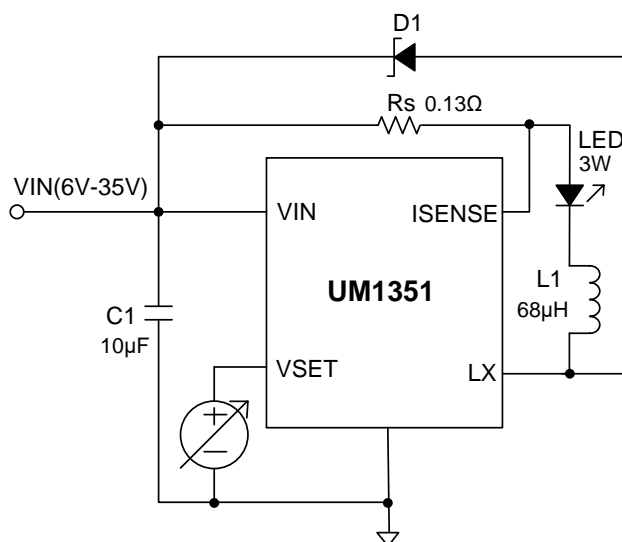
The nominal average output current in the LED(s) is determined by the value of the external current sense resistor ( $R_S$ ) connected between VIN and ISENSE and is given by:

$$I_{OUTnom} = 0.1/R_S \text{ [for } R_S \geq 0.1\Omega \text{]}$$

This equation is valid when VSET pin is floating or applied with a voltage higher than 2.5V (must be less than 5V). Actually,  $R_S$  sets the maximum average current which can be adjusted to a less one by dimming.

### Output Current Adjustment by External DC Control Voltage

The VSET pin can be driven by an external DC voltage ( $V_{EN}$ ), as shown, to adjust the output current to a value below the nominal average value defined by  $R_S$ .



The average output current is given by:

$$I_{OUT} = (0.1 * V_{EN}) / (2.5 * R_S) \text{ [for } 0.3V < V_{EN} < 2.5V \text{]}$$

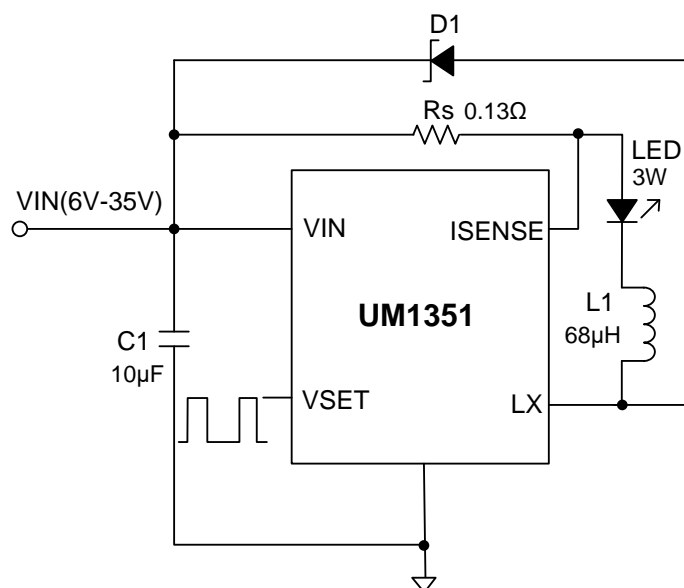
Note that 100% brightness setting corresponds to:  
( $2.5V \leq V_{EN} \leq 5V$ )

### Output Current Adjustment by PWM Control

A Pulse Width Modulated (PWM) signal with duty cycle PWM can be applied to the VSET pin, as shown below, to adjust the output current to a value below the nominal average value set by resistor  $R_S$ :

$$I_{OUT} = (0.1 * D) / R_S \text{ (} 0 \leq D \leq 100\%, 2.5V < V_{pulse} < 5V \text{)}$$

$$I_{OUT} = (V_{pulse} * 0.1 * D) / (2.5 * R_S) \text{ (} 0 \leq D \leq 100\%, 0.5V < V_{pulse} < 2.5V \text{)}$$



PWM dimming provides reduced brightness by modulating the LED's forward current between 0% and 100%. The LED brightness is controlled by adjusting the relative ratios of the on time to the off time. A 25% brightness level is achieved by turning the LED on at full current for 25% of one cycle. To ensure this switching process between on and off state is invisible by human eyes, the switching frequency must be greater than 100Hz. Above 100Hz, the human eyes average the on and off times, seeing only an effective brightness that is proportional to the LED's on-time duty cycle. The advantage of PWM dimming is that the forward current is always constant, therefore the LED color does not vary with brightness as it does with analog dimming. Pulsing the current provides precise brightness control while preserving the color purity.

## Capacitor Selection

A low ESR capacitor should be used for input decoupling, as the ESR of this capacitor appears in series with the supply source impedance and lowers overall efficiency. This capacitor has to supply the relatively high peak current to the coil and smooth the current ripple on the input supply. A minimum value of 4.7µF is acceptable if the input source is close to the device, but higher values will improve performance at lower input voltages, especially when the source impedance is high. The input capacitor should be placed as close as possible to the IC.

For maximum stability over temperature and voltage, capacitors with X7R, X5R, or better dielectric are recommended. Capacitors with Y5V dielectric are not suitable for decoupling in this application and should NOT be used.

## Inductor Selection

Recommended inductor values for the UM1351 are in the range 47µH to 220µH. Higher values of inductance are recommended at higher supply voltages in order to minimize errors due to switching delays, which result in increased ripple and lower efficiency. Higher values of inductance also result in a smaller change in output current over the supply voltage range.

The inductor should be mounted as close to the device as possible with low resistance connections to the LX and VIN pins. The chosen coil should have a saturation current higher than the peak output current and a continuous current rating above the required mean output current. Suitable coils for the UM1351 are listed in the table below:

Load Current	Inductor	Saturation Current
$0.4A < I_{OUT} \leq 0.7A$	47-100 $\mu$ H	1.3-1.5 times of load current
$I_{OUT} \leq 0.4A$	68-220 $\mu$ H	

Order Code	L( $\mu$ H)	Size	DCR (m $\Omega$ )	Saturation Current (mA)	Manufacturer
74408943470	47	4838	305	1100	Würth Elektronik www.we-online.com

The inductor value should be chosen to maintain operating duty cycle and switch 'on'/'off' times within the specified limits over the supply voltage and load current range. The following equations can be used as a guide.

LX Switch 'On' time

$$T_{ON} = (L1 * \Delta I) / (V_{IN} - V_{LED} - I_{LED} * (R_S + R_L + R_{LX}))$$

LX Switch 'Off' time

$$T_{OFF} = (L1 * \Delta I) / (V_{LED} + V_D + I_{LED} * (R_S + R_L))$$

Where:

L1 is the coil inductance (H)

R<sub>L</sub> is the coil resistance ( $\Omega$ )

R<sub>S</sub> is the current sense resistance ( $\Omega$ )

I<sub>LED</sub> is the required LED current (A)

$\Delta I$  is the coil peak-peak ripple current (A) {internally set to  $0.3 \times I_{LED}$ }

V<sub>IN</sub> is the supply voltage (V)

V<sub>LED</sub> is the total LED forward voltage (V)

R<sub>LX</sub> is the switch resistance ( $\Omega$ ) {=0.4 $\Omega$  nominal}

V<sub>D</sub> is the diode forward voltage at the required load current (V)

## Diode Selection

For maximum efficiency and performance, the rectifier (D1) should be a fast low capacitance Schottky diode with low reverse leakage at the maximum operating voltage and temperature. They also provide better efficiency than silicon diodes, due to a combination of lower forward voltage and reduced recovery time.

It is important to select parts with a peak current rating above the peak coil current and a continuous current rating higher than the maximum output load current. It is very important to consider the reverse leakage of the diode when operating above 85 °C. Excess leakage will increase the power dissipation in the device and if close to the load may create a thermal runaway condition.

The higher forward voltage and overshoot due to reverse recovery time in silicon diodes will increase the peak voltage on the LX output. If a silicon diode is used, care should be taken to ensure that the total voltage appearing on the LX pin including supply ripple, does not exceed the specified maximum value.

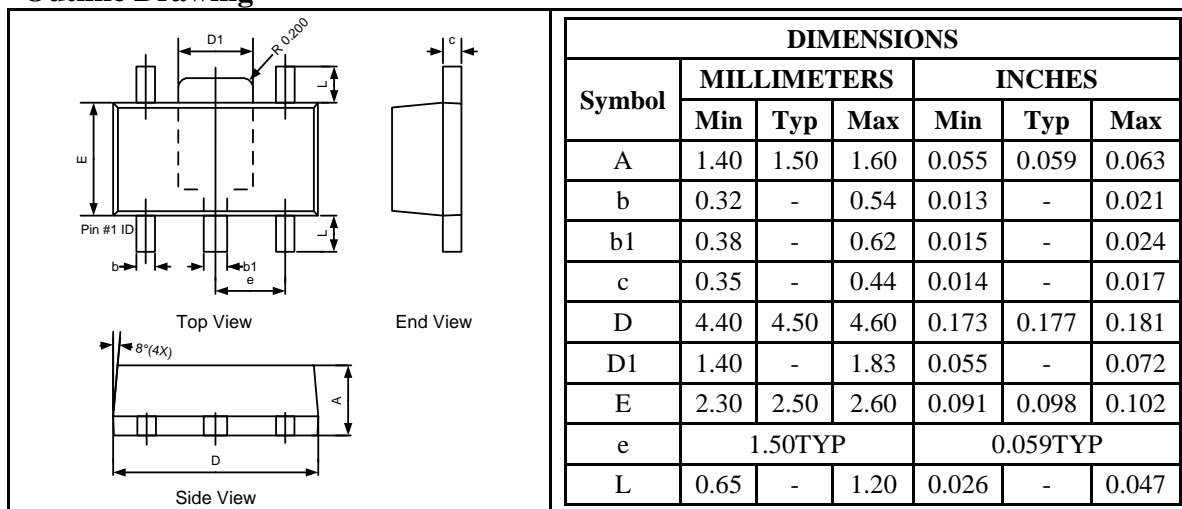
## PCB Layout Guidelines

Careful PCB layout is critical to achieve low switching losses and stable operation. Minimize ground noise by connecting high current ground returns, the input bypass capacitor ground lead, and the output filter ground lead to a single point. Place R<sub>sense</sub> as close as possible to the ISENSE and VIN. For better noise immunity, a Kelvin connection is strongly recommended between ISENSE and R<sub>sense</sub>.

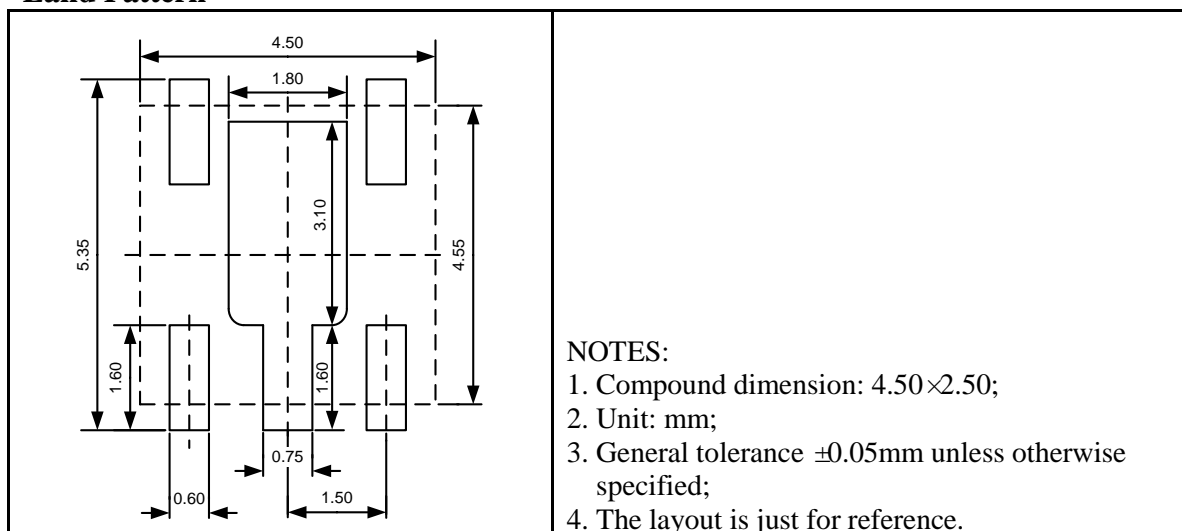
## Package Information

### UM1351Y SOT89-5

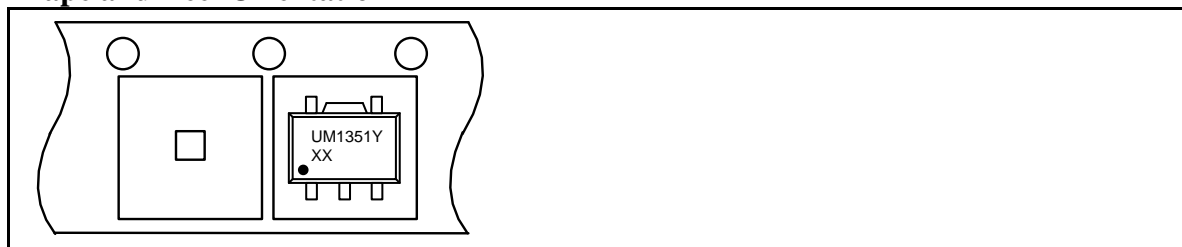
#### Outline Drawing



#### Land Pattern

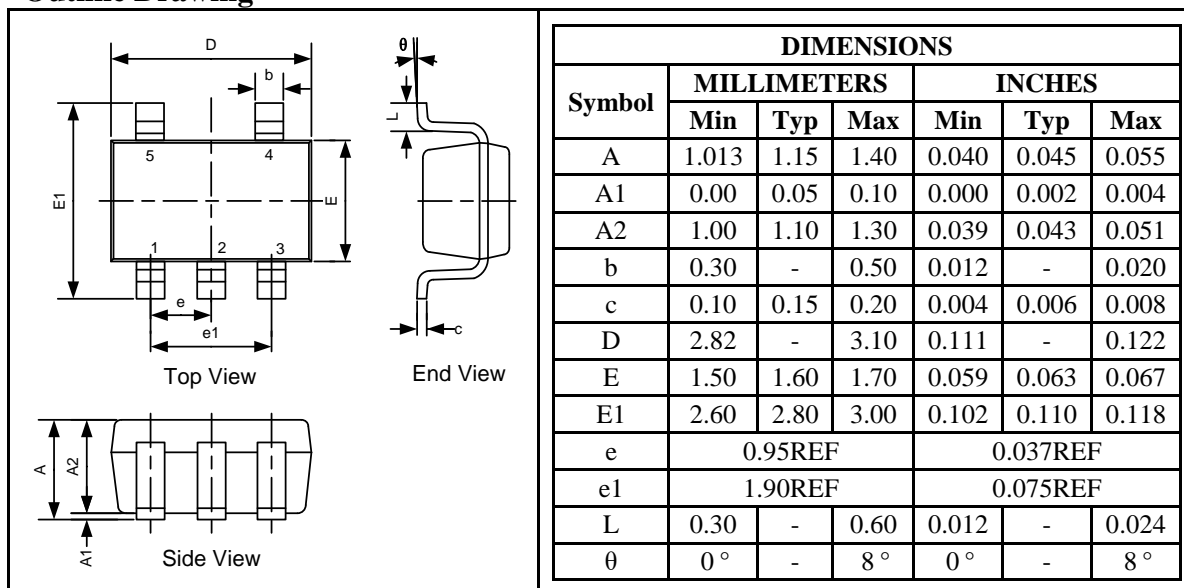


#### Tape and Reel Orientation

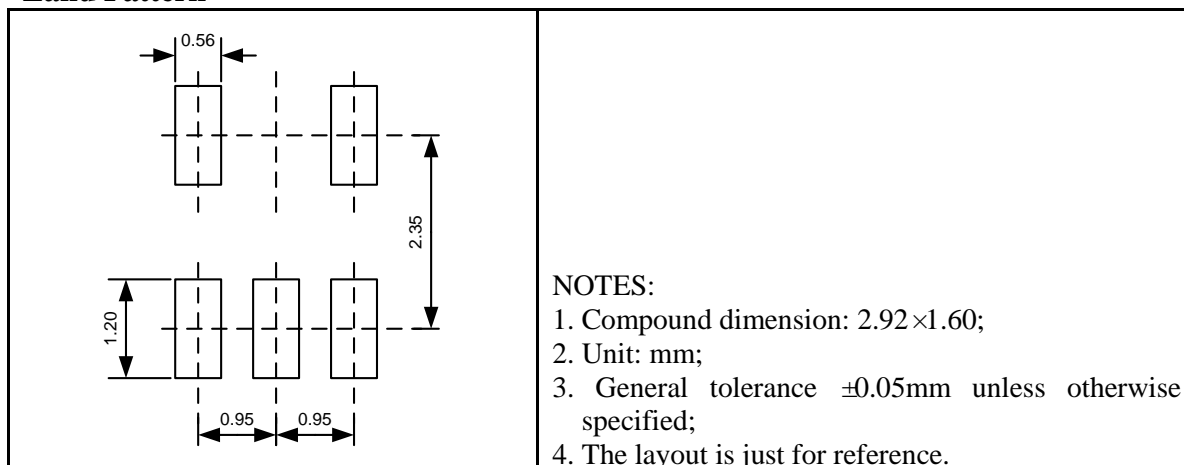


## UM1351S SOT23-5

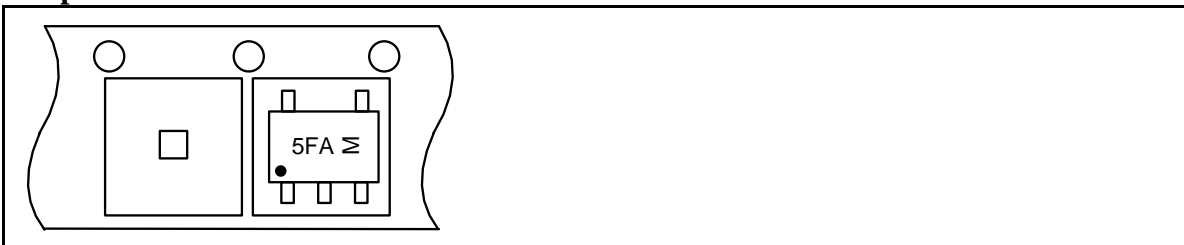
### Outline Drawing



### Land Pattern



### Tape and Reel Orientation



---

## **GREEN COMPLIANCE**

Union Semiconductor is committed to environmental excellence in all aspects of its operations including meeting or exceeding regulatory requirements with respect to the use of hazardous substances. Numerous successful programs have been implemented to reduce the use of hazardous substances and/or emissions.

All Union components are compliant with the RoHS directive, which helps to support customers in their compliance with environmental directives. For more green compliance information, please visit:

[http://www.union-ic.com/index.aspx?cat\\_code=RoHSDeclaration](http://www.union-ic.com/index.aspx?cat_code=RoHSDeclaration)

## **IMPORTANT NOTICE**

The information in this document has been carefully reviewed and is believed to be accurate. Nonetheless, this document is subject to change without notice. Union assumes no responsibility for any inaccuracies that may be contained in this document, and makes no commitment to update or to keep current the contained information, or to notify a person or organization of any update. Union reserves the right to make changes, at any time, in order to improve reliability, function or design and to attempt to supply the best product possible.