

***±15kV ESD-Protected, Fail-Safe, Hot-Swappable  
Auto Polarity Reversal RS-485 Transceivers***

**UM3087E SOP8/DIP8**

**General Description**

The UM3087E series are +5.0V powered ±15kV ESD protected, fail-safe, hot-swappable, auto polarity reversal RS-485 transceivers. The device includes fail-safe circuitry, which guarantees a logic-high receiver output when the receiver inputs are open, shorted or idle. This means that the receiver output will be logic high if all transmitters on a terminated bus are disabled (high impedance). The UM3087E features reduced slew-rate driver that minimizes EMI and reduces reflections caused by improperly terminated cables, allowing error-free data transmission up to 500kbps. All transmitter outputs and receiver inputs are protected to ±8kV using the Human Body Model and ±15kV using the IEC61000-4-2, Air-Gap Discharge.

The UM3087E includes cable auto-invert functions that reverse the polarity of the RS485 bus pins in case the cable is misconnected. Receiver's full fail-safe features are maintained even when the receiver polarity has been reversed.

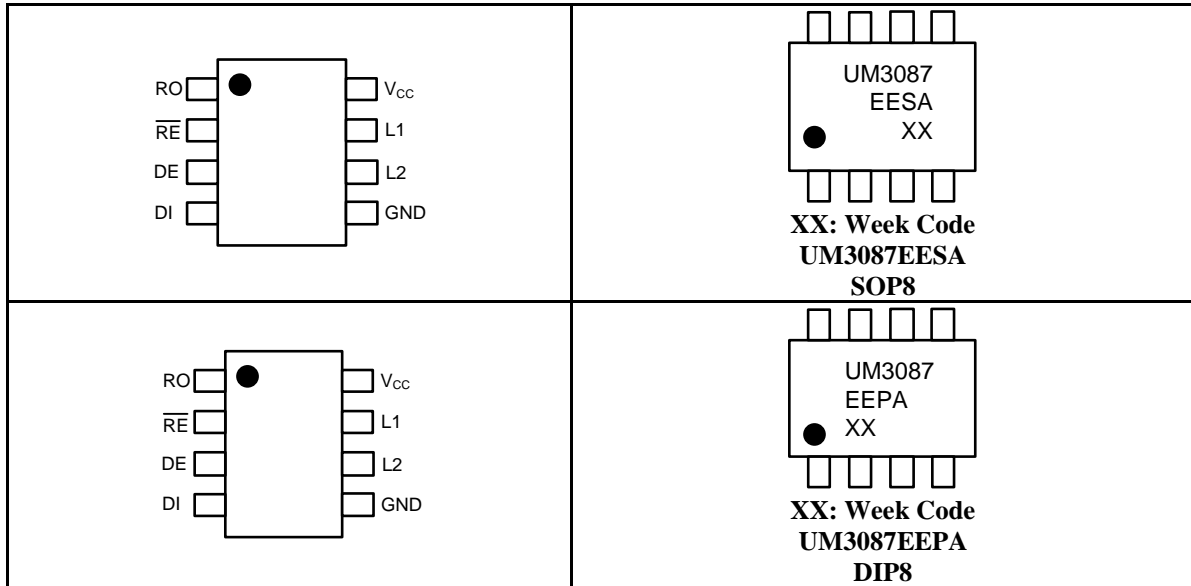
The transceivers typically draw 300µA of supply current when unloaded, or when fully loaded with the drivers disabled. The device has a 1/8-unit-load receiver input impedance that allows up to 256 transceivers on the bus and is intended for half-duplex communications.

**Applications**

- Smart Meters/Automated Meter Reading Systems
- Industrial-Control Local Area Networks
- PROFIBUS® and Other RS-485 Based Field Bus Networks
- Building Lighting and Environmental Control Systems
- Transceivers for EMI-Sensitive Applications

**Features**

- Automatic Polarity Reversal RS-485 Transceivers
- I/O Logic Compatible with +5V, +3.3V & +1.8V Logic
- ESD Protection for RS-485 I/O Pins  
±15kV—IEC61000-4-2, Air-Gap Discharge  
±8kV—IEC61000-4-2, Contact Discharge
- True Fail-Safe Receiver
- Enhanced Slew-Rate Limiting
- Allows up to 256 Transceivers on the Bus
- Thermal Shutdown
- Current-Limiting for Driver Overload Protection

**Pin Configurations**
**Top View**

**Ordering Information**

Part Number	Marking Code	Operating Temperature	Package Type	Shipping Qty
UM3087EESA	UM3087EESA	-40 °C to +85 °C	SOP8	3000pcs/13 Inch Tape & Reel
UM3087EIPA	UM3087EIPA	-40 °C to +85 °C	DIP8	50pcs/Tube

**Absolute Maximum Ratings**

Symbol	Parameter	Value	Unit
$V_{CC}$	Supply Voltage	+7	V
	Control Input Voltage (/RE, DE)	-0.3V to ( $V_{CC} + 0.3V$ )	V
	Driver Input Voltage (DI)	-0.3V to ( $V_{CC} + 0.3V$ )	V
	Driver Output Voltage (L1, L2)	-7.5 to +12.5	V
	Receiver Input Voltage (L1, L2)	-7.5 to +12.5	V
	Receiver Output Voltage (RO)	-0.3V to ( $V_{CC} + 0.3V$ )	V
$T_A$	Ambient Temperature	-40 to +85	°C
$T_{STG}$	Storage Temperature Range	-65 to +160	°C
$T_L$	Lead Temperature for Soldering 10 seconds	+300	°C

**DC Electrical Characteristics**

( $V_{CC} = +5V \pm 5\%$ ,  $T_A = T_{MIN}$  to  $T_{MAX}$ , unless otherwise noted. Typical values are at  $V_{CC} = +5V$  and  $T_A = +25\text{ }^\circ\text{C}$ .) (Note 1)

Parameter	Symbol	Test Conditions	Min	Typ	Max	Unit	
<b>SUPPLY CURRENT</b>							
Supply Current	$I_{CC}$	No load, DI = GND or $V_{CC}$	$DE=V_{CC},$ $\overline{RE}=0V$ or $V_{CC}$	0.3			mA
			$DE=0V,$ $\overline{RE}=0V$	0.25			
Supply Current in Shutdown Mode	$I_{SHDN}$	$DE=GND, \overline{RE}=V_{CC}$	0.002		10	$\mu\text{A}$	
<b>LOGIC</b>							
Input High Voltage	$V_{IH1}$	DE, DI, $\overline{RE}$	2.0			V	
Input Low Voltage	$V_{IL1}$	DE, DI, $\overline{RE}$			0.4	V	
DI Input Hysteresis	$V_{HYS}$			100		mV	
<b>DRIVER</b>							
Differential Driver Output	$V_{OD1}$	No Load, Figure 2	4.9		5	V	
Differential Driver Output	$V_{OD2}$	Figure 2, $R = 54\Omega$	2.0	2.2		V	
Change-in-Magnitude of Differential Output Voltage	$\Delta V_{OD}$	Figure 2, $R = 54\Omega$ ; (Note 2)			0.2	V	
Driver Common-Mode Output Voltage	$V_{OC}$	Figure 2, $R = 54\Omega$			3.0	V	
Change-in-Magnitude of Common-Mode Voltage	$\Delta V_{OC}$	Figure 2, $R = 54\Omega$ ; (Note 2)			0.2	V	
Driver Short-Circuit Output Current (Note 3)	$I_{OSD}$	$V_{OUT} = -7V$		-250		mA	
		$V_{OUT} = 12V$		250			

**DC Electrical Characteristics (Continued)**

( $V_{CC} = +5V \pm 5\%$ ,  $T_A = T_{MIN}$  to  $T_{MAX}$ , unless otherwise noted. Typical values are at  $V_{CC} = +5V$  and  $T_A = +25\text{ }^\circ\text{C}$ .) (Note 1)

Parameter	Symbol	Test Conditions	Min	Typ	Max	Unit
<b>RECEIVER</b>						
Receiver Differential Threshold Voltage	$V_{TH}$	$-7V \leq V_{CM} \leq 12V$	-200		-50	mV
Receiver Input Hysteresis	$\Delta V_{TH}$	$V_{CM} = 0V$		25		mV
Receiver Input Resistance	$R_{IN}$	$-7V \leq V_{CM} \leq 12V$	96			k $\Omega$
Input Current (L1 and L2)	$I_{IN2}$	DE = GND, $V_{CC} = GND$ or 5V	$V_{IN} = 12V$		1.0	mA
			$V_{IN} = -7V$		-0.8	
Receiver Output High Voltage	$V_{OH}$	$I_O = -1.5mA$ , $V_{ID} = 200mV$	$V_{CC} - 1.5$			V
Receiver Output Low Voltage	$V_{OL}$	$I_O = 2.5mA$ , $V_{ID} = 200mV$			0.4	V
Three-State Output Current at Receiver	$I_{OZR}$	$0V \leq V_O \leq V_{CC}$			$\pm 1$	$\mu A$
Receiver Output Short Circuit Current	$I_{OSR}$	$0V \leq V_{RO} \leq V_{CC}$	$\pm 8$		$\pm 60$	mA
<b>ESD Protection</b>						
ESD Protection for A, B		Human Body Model		$\pm 8$		kV
		IEC61000-4-2 Air Discharge		$\pm 15$		
		IEC61000-4-2 Contact		$\pm 8$		

Note 1: All currents into the device are positive; all currents out of the device are negative. All voltages are referred to device ground unless otherwise noted.

Note 2:  $\Delta V_{OD}$  and  $\Delta V_{OC}$  are the changes in  $V_{OD}$  and  $V_{OC}$ , respectively, when the DI input changes state.

Note 3: Maximum current level applies to peak current just prior to fold back current limiting; minimum current level applies during current limiting.

**Switching Characteristics**

( $V_{CC} = +5V \pm 5\%$ ,  $T_A = T_{MIN}$  to  $T_{MAX}$ , unless otherwise noted. Typical values are at  $V_{CC} = +5V$  and  $T_A = +25\text{ }^\circ\text{C}$ .)

Parameter	Symbol	Test Conditions	Min	Typ	Max	Unit
Maximum Data Rate	$f_{MAX}$			500		kbps
Driver Input-to-Output	$t_{DPLH}$	Figures 3 and 7, $R_{DIFF} = 54\Omega$ , $C_{L1} = C_{L2} = 100\text{pF}$	250	720	1000	ns
	$t_{DPHL}$		250	720	1000	
Driver Output Skew $ t_{DPLH} - t_{DPHL} $	$t_{DSKEW}$	Figures 3 and 7, $R_{DIFF} = 54\Omega$ , $C_{L1} = C_{L2} = 100\text{pF}$		3	100	ns
Driver Rise or Fall Time	$t_{DR}, t_{DF}$	Figures 3 and 7, $R_{DIFF} = 54\Omega$ , $C_{L1} = C_{L2} = 100\text{pF}$	200	530	750	ns
Driver Enable to Output High	$t_{DZH}$	Figures 4 and 8, $C_L = 100\text{pF}$ , S2 closed			2500	ns
Driver Enable to Output Low	$t_{DZL}$	Figures 4 and 8, $C_L = 100\text{pF}$ , S1 closed			2500	ns
Driver Disable Time from Low	$t_{DLZ}$	Figures 4 and 8, $C_L = 15\text{pF}$ , S1 closed			100	ns
Driver Disable Time from High	$t_{DHZ}$	Figures 4 and 8, $C_L = 15\text{pF}$ , S2 closed			100	ns
Receiver Input to Output	$t_{RPLH}, t_{RPHL}$	$ V_{ID}  \geq 2.0\text{V}$ ; rise and fall time of $V_{ID} \leq 15\text{ns}$		127	200	ns
Differential Receiver Skew $ t_{RPLH} - t_{RPHL} $	$t_{RSKD}$	Figures 6 and 9; $ V_{ID}  \geq 2.0\text{V}$ ; rise and fall time of $V_{ID} \leq 15\text{ns}$		3	30	ns
Receiver Enable to Output Low	$t_{RZL}$	Figures 5 and 10, $C_L = 100\text{pF}$ , S1 closed		20	50	ns
Receiver Enable to Output High	$t_{RZH}$	Figures 5 and 10, $C_L = 100\text{pF}$ , S2 closed		20	50	ns
Receiver Disable Time from Low	$t_{RLZ}$	Figures 5 and 10, $C_L = 100\text{pF}$ , S1 closed		20	50	ns
Receiver Disable Time from High	$t_{RHZ}$	Figures 5 and 10, $C_L = 100\text{pF}$ , S2 closed		20	50	ns
Time to Shutdown	$t_{SHDN}$	(Note 4)	50	200	600	ns
Driver Enable from Shutdown to Output High	$t_{DZH(SHDN)}$	Figures 4 and 8, $C_L = 15\text{pF}$ , S2 closed			4500	ns
Driver Enable from Shutdown to Output Low	$t_{DZL(SHDN)}$	Figures 4 and 8, $C_L = 15\text{pF}$ , S1 closed			4500	ns
Receiver Enable from Shutdown to Output High	$t_{RZH(SHDN)}$	Figures 5 and 10, $C_L = 100\text{pF}$ , S2 closed			3500	ns
Receiver Enable from Shutdown to Output Low	$t_{RZL(SHDN)}$	Figures 5 and 10, $C_L = 100\text{pF}$ , S1 closed			3500	ns

Note 4: The device is put into shutdown by bringing RE high and DE low. If the enable inputs are in this state for less than 50ns, the device is guaranteed not to enter shutdown. If the enable inputs are in this state for at least 600ns, the device is guaranteed to have entered shutdown.

### Non-Polarity Features

The Polarities of driver and receiver is always kept the same status. When  $DE=\overline{RE}=\text{LOGIC } 0$  and RO is standing LOGIC 0 for  $T_s$  time, the polarities will be reversed automatically.

Parameter	Symbol	Test Conditions	Min	Typ	Max	Unit
Waiting Time for Inverting	$T_s$	$DE=\overline{RE}=L$ , RO keeps L	150	200	250	ms

### Pin Description

Pin Number	Symbol	Function
1	RO	Receiver Output.
2	$\overline{RE}$	Receiver Enable. Drive $\overline{RE}$ low to enable Receiver, RO is high impedance when $\overline{RE}$ is high. Drive $\overline{RE}$ high and DE low to enter low-power shutdown mode.
3	DE	Driver Enable. Drive DE high to enable drivers. The outputs are high impedance when DE is low. Drive $\overline{RE}$ high and DE low to enter low-power shutdown mode.
4	DI	Driver Input.
5	GND	Ground
6	L2	RS485 Receiver Input and Driver Output Pin. Normally L2 is non inverting Bus I/O for transceiver (Referred as A in traditional RS485 Transceiver) and L1 is inverting Bus I/O for transceiver (Referred as B in traditional RS485 Transceiver). Under Polarity reversal status, L2 become inverting bus I/O and L1 become non inverting Bus I/O.
7	L1	
8	$V_{CC}$	Power Supply for RS-485 transceiver

### RS-485 Communication Function Table

Table1. Transmitting

INPUTS			OUTPUTS	
$\overline{RE}$	DE	DI	A	B
X	H	H/O	H	L
X	H	L	L	H
L	L/O	X	Z	Z
H	L/O	X	Shutdown	

Table2. Receiving

INPUTS			OUTPUTS
$\overline{RE}$	DE	$V_{ID}=V_A-V_B$	RO
L	X	$\geq -50\text{mV}$	H
L	X	$\leq -200\text{mV}$	L
L	X	Open/Shorted	H
H	H	X	Z
H	L	X	Shutdown

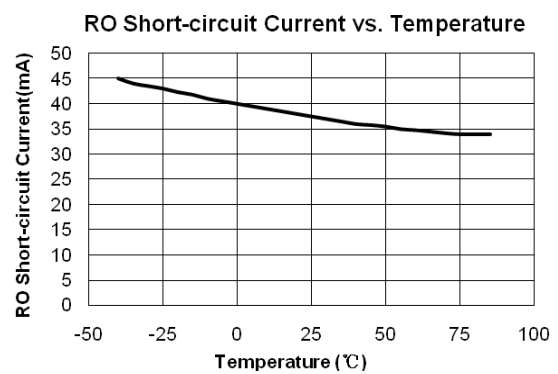
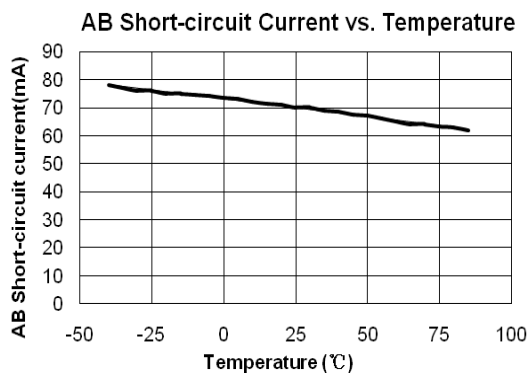
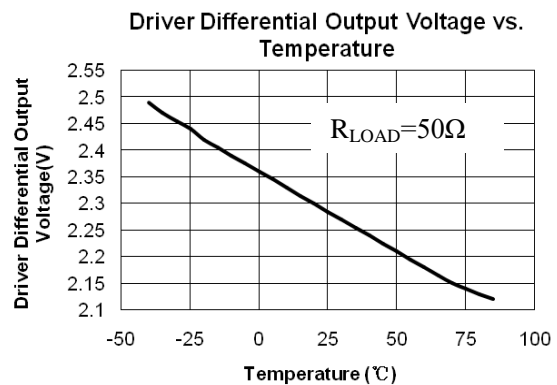
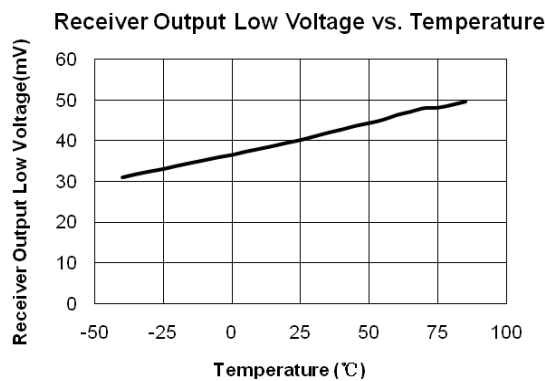
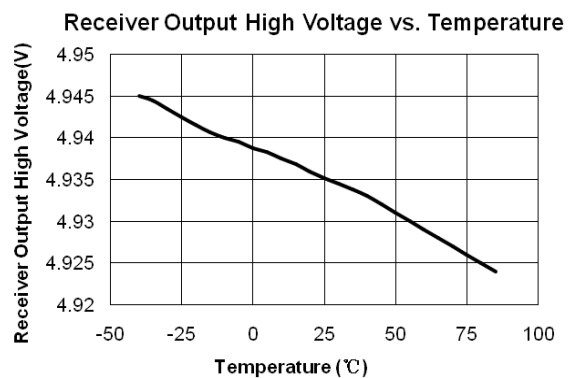
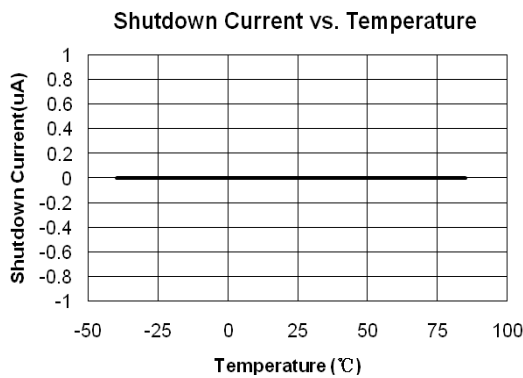
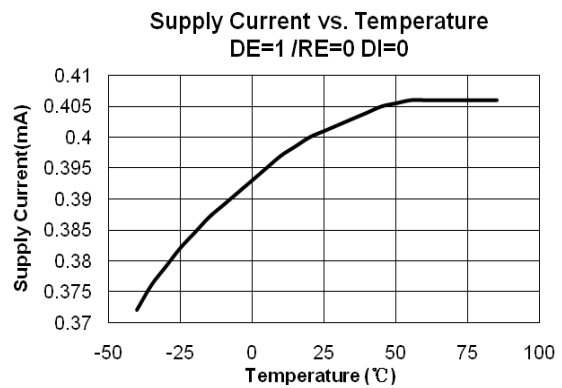
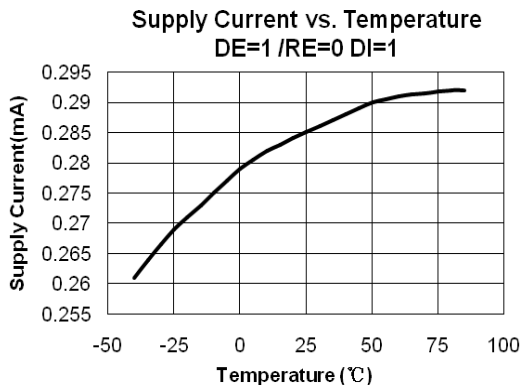
H: High, L: Low, X: Do not care, Z: High impedance.

$V_A$ : Input Voltage of RS485 Non Inverting Bus I/O terminal,

$V_B$ : Input Voltage of RS485 Inverting Bus I/O terminal.

### Typical Operating Characteristics

( $V_{CC}=5V$ , driver output and receiver output no load, unless otherwise noted.)



**Typical Operating Circuit**

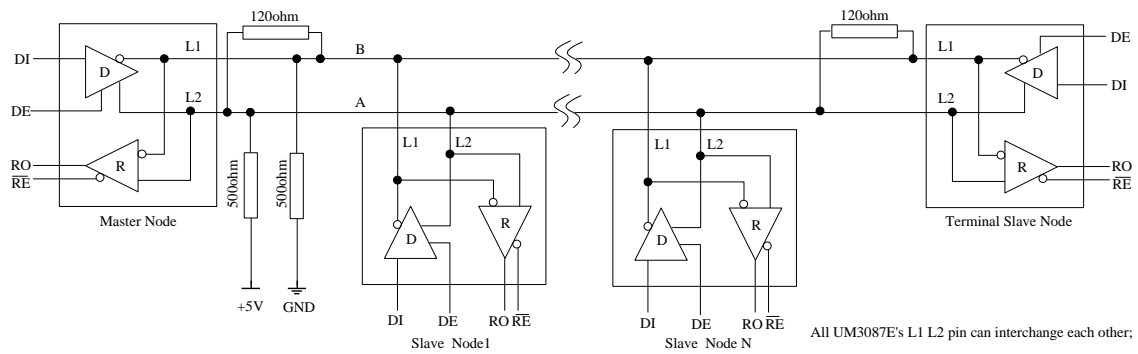


Figure 1. Typical Half-Duplex Non-Polarity RS-485 Network

**Test Circuit**

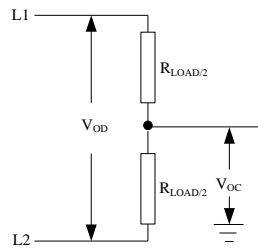


Figure 2. Driver DC Test Load

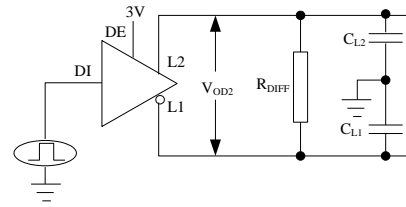


Figure 3. Driver Timing Test Circuit

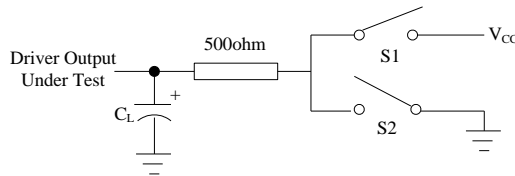


Figure 4. Driver Enable/Disable Timing Test Load

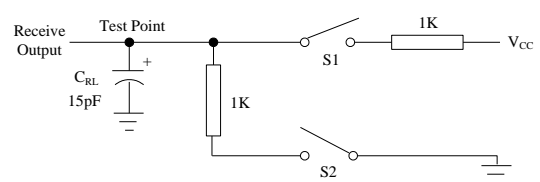


Figure 5. Receiver Enable/Disable Timing Test Load

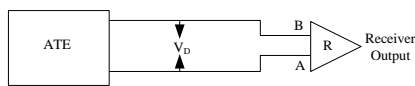


Figure 6. Receiver Propagation Delay Test Circuit



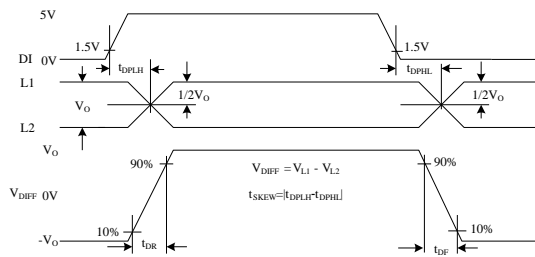


Figure 7. Driver Propagation Delays

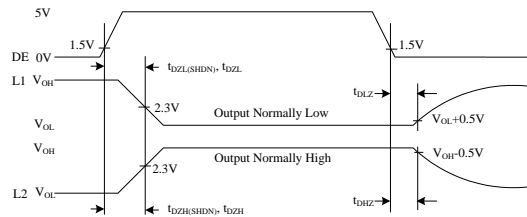


Figure 8. Driver Enable and Disable Times

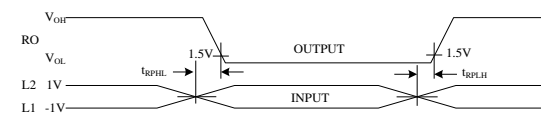


Figure 9. Receiver Propagation Delays

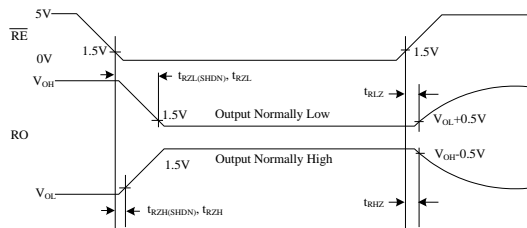


Figure 10. Receiver Enable and Disable Times

## Detail Description

### Polarity Reversal Function

With large node count RS485 network, it is common for some cable data lines to be wired backwards during installation. When this happens, the node is unable to communicate over network, must then be rewired to the connector, which is time consuming.

The UM3087E simplifies this task by including an automatic polarity reversal function inside. Upon UM3087E power up, when DE=/RE=logic low, if RO keeps logic low over a predefined time  $T_S$  (i.e.  $T_S=200ms$  in UM3087E), the chip reverse its bus pins polarity, so L1 become non-inverting, and L2 become inverting. Otherwise, the chip operates like any standard RS485 transceiver, and the bus pins have their normal polarity definition of L2 as non-inverting pin and L1 as inverting pin.

Union Semi's unique automatic polarity reversal function is superior to that found on competing devices, because the receiver's full fail safe function is maintained, even when the RX polarity is reversed.

### Fail-Safe and Hot-Swap

The UM3087E guarantees a logic high receiver output when the receiver inputs are shorted or open, or when they are connected to a terminated transmission line with all drivers disabled. This is done by setting the receiver input threshold between  $-50mV$  and  $-200mV$ . If the differential receiver input voltage  $V_{ID}$  is greater than or equal to  $-50mV$ , RO is logic high. If  $V_{ID}$  is less than or equal to  $-200mV$ , RO is logic low. In the case of a terminated bus with all transmitters disabled, the receiver's differential input voltage is pulled to  $0V$  by the termination. With the receiver threshold of UM3087E, this results in logic high with a  $50mV$  minimum noise margin, and this  $-50mV$  to  $-200mV$  threshold complies with the  $\pm 200mV$  EIA/TIA-485 standard.

When circuit boards with RS485 transceiver are inserted into a hot or powered backplane, differential disturbances to the data bus can lead to data errors. Upon initial circuit board insertion, the microprocessor undergoes its own power-up sequence. During this period, the processor's logic output drivers are high impedance and unable to driver the DE and /RE inputs of these devices to a defined logic level. Leakage currents up to  $\pm 10\mu A$  from the high impedance state of processor's logic drivers could cause standard CMOS enable inputs of a transceiver to drift to an incorrect logic level. Additionally, parasitic circuit board capacitance could cause coupling of  $V_{CC}$

or GND to the enable inputs. Without the hot-swap capability, these facts could improperly enable the transceiver's driver or receiver.

When VCC rises, an internal pull down circuit holds DE low and /RE high. After the initial power up sequence, the pull down/pull up circuit becomes transparent, resetting the hot-swap tolerable input. This hot-swap input circuit enhances UM3087E's performance in harsh environment application.

### **±15kV ESD Protection**

All pins on UM3087E device include ESD protection structures, and the family incorporates advanced structures which allow the RS-485 pins (L1, L2) to survive ESD events up to ±15kV. The RS-485 pins are particularly vulnerable to ESD damage because they typically connect to an exposed port on the exterior of the finished product. The ESD structures withstand high ESD in all states: normal operation, shutdown, and powered down. After an ESD event, circuits keep working without latch up. The ESD protection can be tested in various ways and with reference to the ground pin. The L1, L2 are characterized for protection to the following limits: ±8kV using the Human Body Model and ±15kV IEC61000-4-2, Air-Gap Discharge, and ±8kV Contact Discharge.

The logic pins (RO,  $\overline{\text{RE}}$ , DE, DI) are characterized for protection to the following limits: ±2kV using the Human Body Model.

---

## Applications Information

### Non-Polarity transceiver

When established the non-polarity RS-485 net, you should pay attention to two conditions. First, a pair of bias resistance (pull-up to +5V for RS-485 A bus, push-down to GND for RS-485 B bus) must be required, usually be built in the master node, or independently, 500Ω resistance is recommended. The other nodes don't need bias resistance anymore. Second, the transceiver rate must be higher than 100bps or the maximum transmitting time for low logic should be less than 100ms.

### 256 Transceivers on the Bus

The standard RS-485 receiver input impedance is 12kΩ (one unit load), and the standard driver can drive up to 32 unit loads. The Union family of transceivers have a 1/8 unit load receiver input impedance (96kΩ), allowing up to 256 transceivers to be connected in parallel on one communication line. Any combination of these devices and/or other RS-485 transceivers with a total of 32 unit loads or less can be connected to the line.

### Low-Power Shutdown Mode

Low-power shutdown mode is initiated by bringing both  $\overline{RE}$  high and DE low. In shutdown, the device typically draws only 10uA of supply current.  $\overline{RE}$  and DE may be driven simultaneously; the parts are guaranteed not to enter shutdown if  $\overline{RE}$  is high and DE is low for less than 50ns. If the inputs are in this state for at least 600ns, the parts are guaranteed to enter shutdown. Enable times  $t_{ZH}$  and  $t_{ZL}$  in the Switching Characteristics tables assume the part was not in a low-power shutdown state. Enable times  $t_{ZH(SHDN)}$  and  $t_{ZL(SHDN)}$  assume the parts were shut down. It takes drivers and receivers longer to become enabled from low-power shutdown mode ( $t_{ZH(SHDN)}$ ,  $t_{ZL(SHDN)}$ ) than from driver/receiver-disable mode ( $t_{ZH}$ ,  $t_{ZL}$ ).

### Driver Output Protection

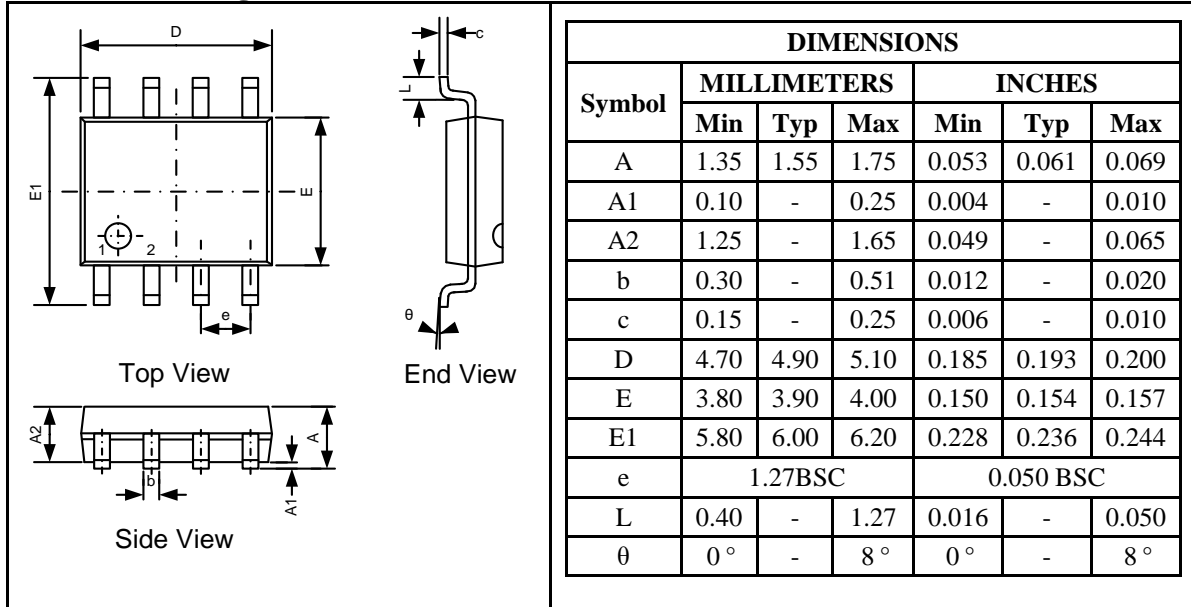
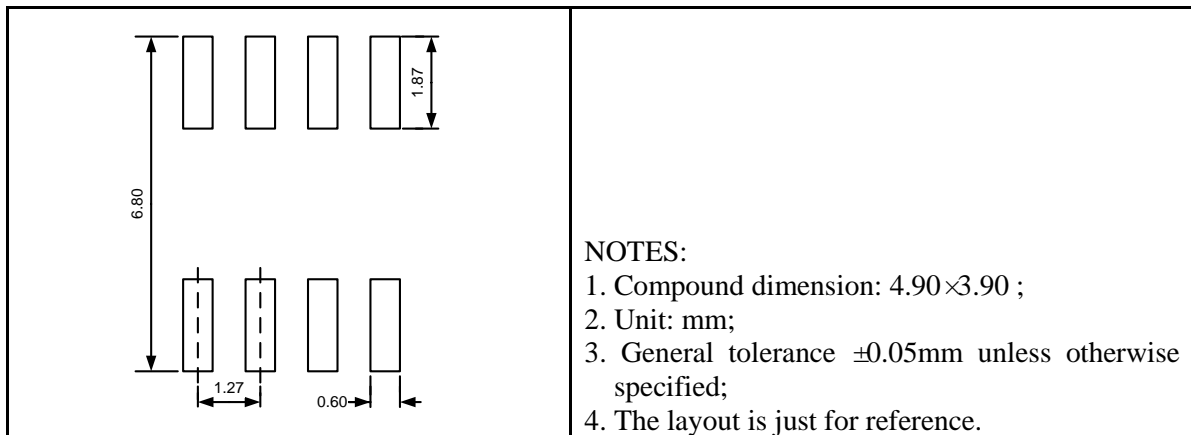
Two mechanisms prevent excessive output current and power dissipation caused by faults or by bus contention. The first, a foldback current limit on the output stage, provides immediate protection against short circuits over the whole common-mode voltage range (see Typical Operating Characteristics). The second, a thermal shutdown circuit, forces the driver outputs into a high-impedance state if the die temperature becomes excessive.

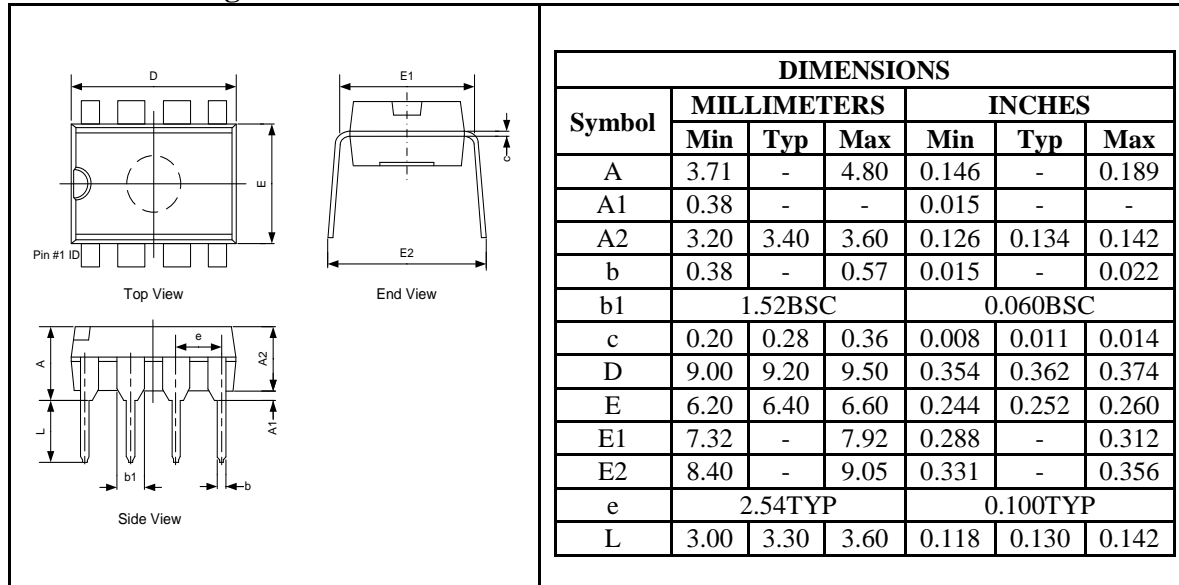
### Line Length vs. Data Rate

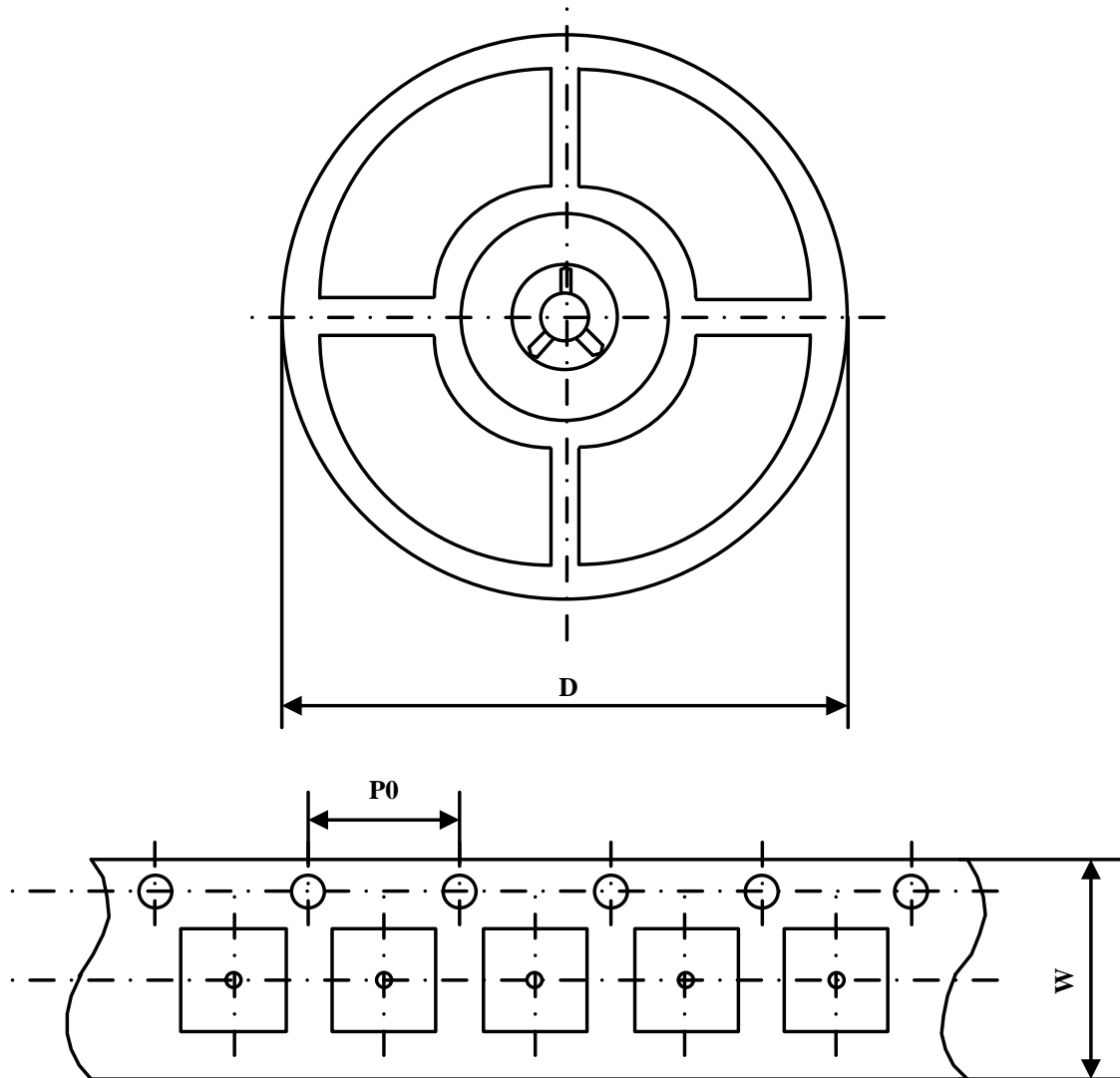
The RS-485/RS-422 standard covers line lengths up to 4000 feet. For line lengths greater than 4000 feet, repeater is required.

### Data Bus Termination and Stub Length

The UM3087E transceivers are designed for bidirectional data communications on multipoint bus transmission lines. To minimize reflections, the line should be terminated at both ends in its characteristic impedance, and stub lengths off the main line should be kept as short as possible.

**Package Information**
**UM3087EESA SOP8**
**Outline Drawing**

**Land Pattern**

**Tape and Reel Orientation**


**UM3087EPA DIP8**
**Outline Drawing**


**Packing Information**


Part Number	Package Type	Carrier Width(W)	Pitch(P0)	Reel Size(D)
UM3087EESA	SOP8	12 mm	4 mm	330 mm

---

## GREEN COMPLIANCE

Union Semiconductor is committed to environmental excellence in all aspects of its operations including meeting or exceeding regulatory requirements with respect to the use of hazardous substances. Numerous successful programs have been implemented to reduce the use of hazardous substances and/or emissions.

All Union components are compliant with the RoHS directive, which helps to support customers in their compliance with environmental directives. For more green compliance information, please visit:

[http://www.union-ic.com/index.aspx?cat\\_code=RoHSDeclaration](http://www.union-ic.com/index.aspx?cat_code=RoHSDeclaration)

## IMPORTANT NOTICE

The information in this document has been carefully reviewed and is believed to be accurate. Nonetheless, this document is subject to change without notice. Union assumes no responsibility for any inaccuracies that may be contained in this document, and makes no commitment to update or to keep current the contained information, or to notify a person or organization of any update. Union reserves the right to make changes, at any time, in order to improve reliability, function or design and to attempt to supply the best product possible.



Union Semiconductor, Inc

Add: Unit 606, No.570 Shengxia Road, Shanghai 201210

Tel: 021-51093966

Fax: 021-51026018

Website: [www.union-ic.com](http://www.union-ic.com)